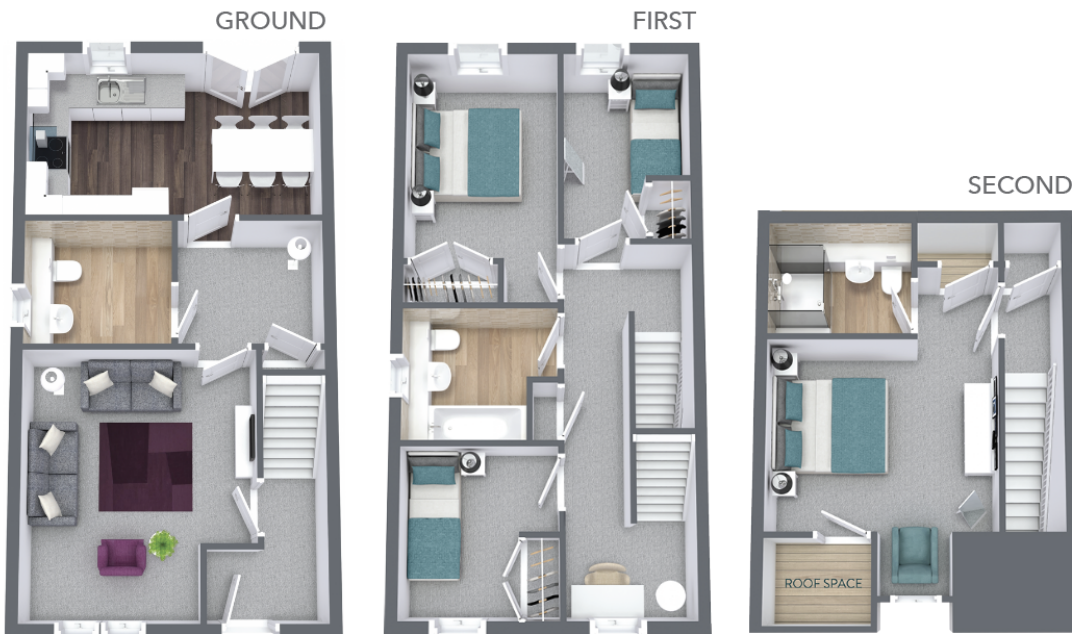
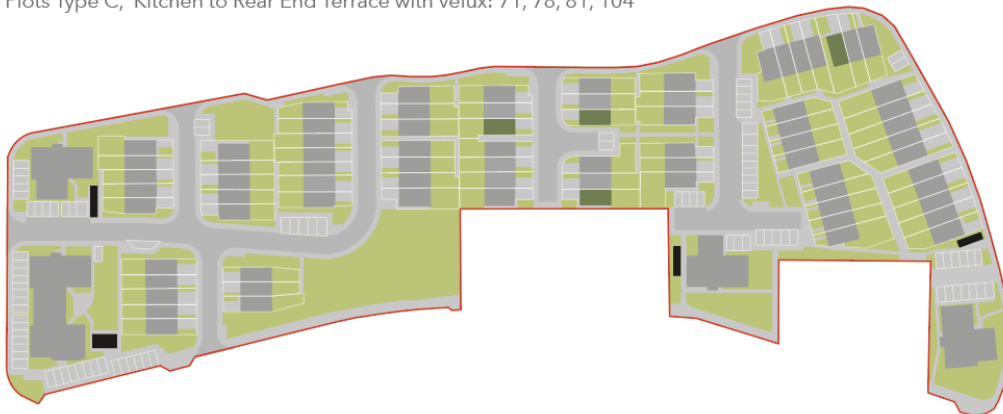


THE NORTON

**FOUR BEDROOM
THREE STOREY TOWNHOUSE**

Plots Type C, Kitchen to Rear End Terrace with velux: 71, 78, 81, 104



Ground Floor

Lounge
3.6m x 4.0m
11ft 8in x 13ft 1in

Kitchen/Dining
4.6m x 2.9m
15ft x 9ft 5in

WC
2.3m x 2.0m
7ft 5in x 6ft 5in

First Floor

Bedroom one
2.5m x 3.5m
8ft 2in x 11ft 4in

Bedroom two
2.1m x 3.1m
6ft 8in x 10ft 1in

Bedroom three
2.5m x 2.7m
8ft 2in x 8ft 8in

Bathroom
2.0m x 2.1m
6ft 5in x 6ft 8in

Second Floor

Bedroom four
3.6m x 3.0m
11ft 8in x 9ft 8in

En-suite
2.3m x 1.8m
7ft 5in x 5ft 9in

SECOND

